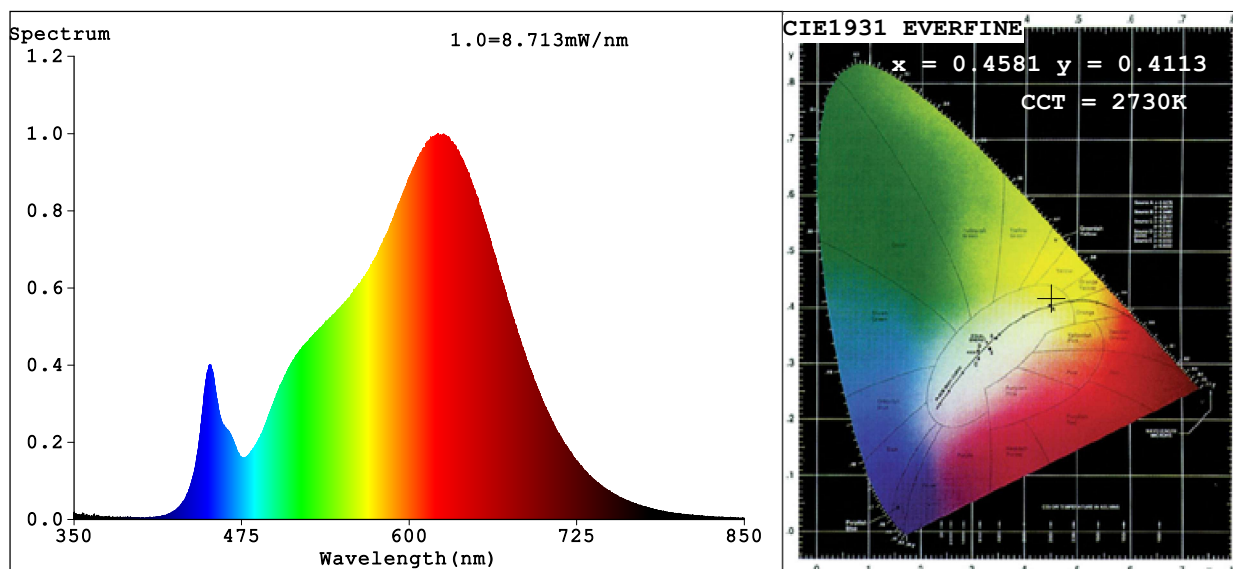


Spectrum Test Report



Color Parameters:

Chromaticity Coordinate: $x=0.4581$ $y=0.4113$ $u'=0.2610$ $v'=0.5274$

CCT=2730K (Duv=0.0004) Dominant WL:Ld =583.9nm Purity=61.0%

Ratio:R=26.4% G=71.2% B=2.4%; Peak WL:Lp=621.4nm FWHM=144.9nm

Render Index:Ra=94.0 CRI=91.5 TM30:Rf=92 Rg=100

R1 =95 R2 =97 R3 =99 R4 =95 R5 =94 R6 =97 R7 =92

R8 =82 R9 =61 R10=93 R11=97 R12=85 R13=95 R14=98 R15=90

Photo Parameters:

Flux = 394.7 lm Eff. : 48.17 lm/W Fe = 1.384 W

Electrical parameters:

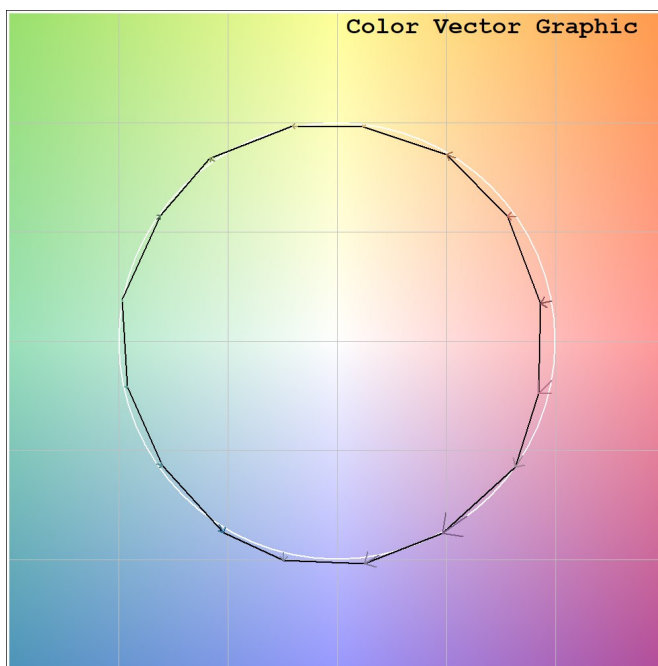
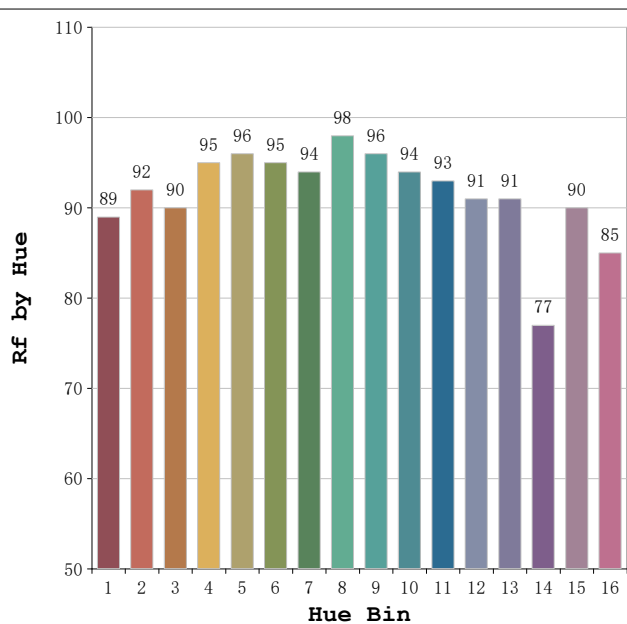
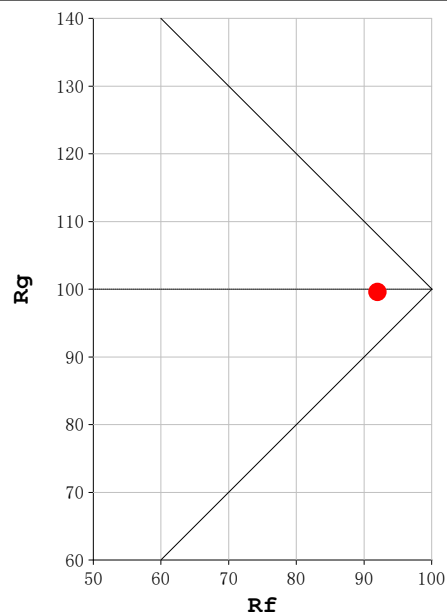
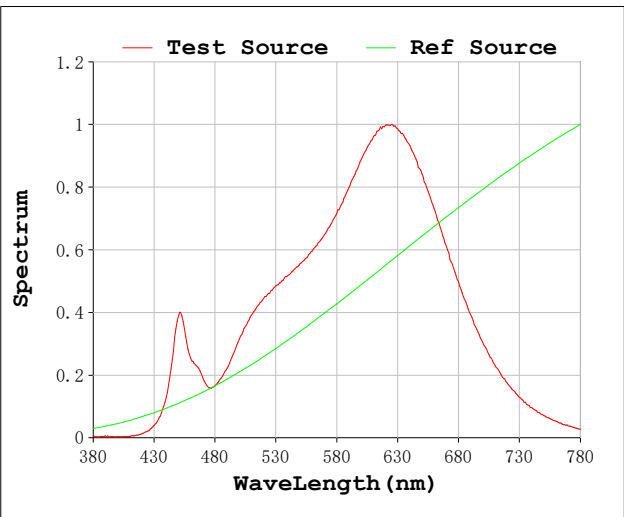
V = 220.14 V I = 0.03923 A P = 8.194 W PF = 0.9487

Status: Integral T = 3635 ms Ip = 49679 (76%)

Model:Focalis Axis 8W
Tester:Sergio Carneros
Temperature:25Deg
Manufacturer:Luz Negra S.L

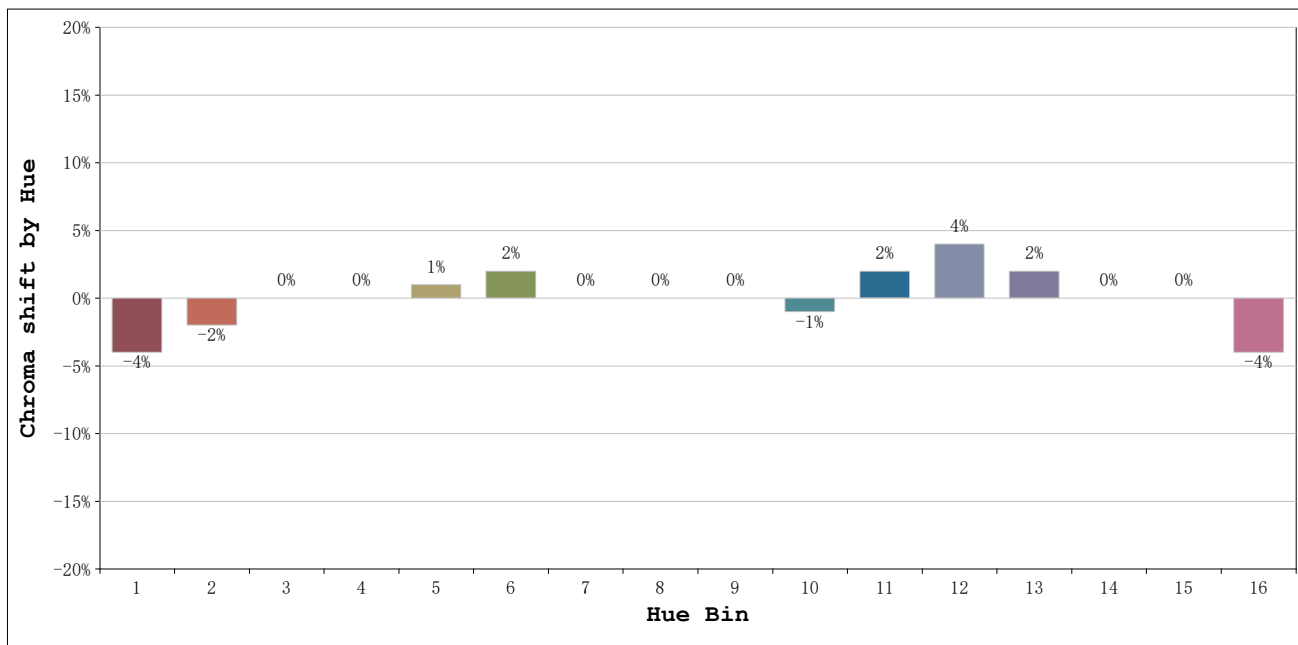
Number:2700k 22° Ref. Blanco
Date:2026-06-04 14:36:22
Humidity:57%
Remarks:1 unidad

Rf: 92 **CCT: 2730 K** **u': 0.2610**
Rg: 100 **Duv: 0.0004** **v': 0.5274**



Model:Focalis Axis 8W
 Tester:Sergio Carneros
 Temperature:25Deg
 Manufacturer:Luz Negra S.L

Number:2700k 22° Ref. Blanco
 Date:2026-06-04 14:36:22
 Humidity:57%
 Remarks:1 unidad



			Graphic shift(%)	
Hue Bin	Hue Angle	Rf	Chroma	Hue
1	0.0° - 22.5°	89	-4	0
2	22.5° - 45.0°	92	-2	2
3	45.0° - 67.5°	90	0	4
4	67.5° - 90.0°	95	0	1
5	90.0° - 112.5°	96	1	2
6	112.5° - 135.0°	95	2	1
7	135.0° - 157.5°	94	0	-2
8	157.5° - 180.0°	98	0	0
9	180.0° - 202.5°	96	0	0
10	202.5° - 225.0°	94	-1	2
11	225.0° - 247.5°	93	2	4
12	247.5° - 270.0°	91	4	1
13	270.0° - 292.5°	91	2	-6
14	292.5° - 315.0°	77	0	-13
15	315.0° - 337.5°	90	0	-5
16	337.5° - 360.0°	85	-4	-6

Model:Focalis Axis 8W
 Tester:Sergio Carneros
 Temperature:25Deg
 Manufacturer:Luz Negra S.L

Number:2700k 22° Ref. Blanco
 Date:2026-06-04 14:36:22
 Humidity:57%
 Remarks:1 unidad